

# State of Wyoming Corner Record

(In compliance with the **CORNER PERPETUATION AND FILING ACT**, Wyoming Statutes, 1997 Section 33-29-140 et. seq., and the Rules and Regulations of the Board of Professional Engineers and Professional Land Surveyors)

Reverse side of this form may be used if more space is needed.

Record of original survey and citation of source of historical information (if corner is lost or obliterated). Description of corner monumentation evidence found and/or monument and accessories established to perpetuate the location of this corner. Sketch of relative location of monument, accessories, and reference points with course and distance to adjacent corner(s) (if determined in this survey). Method and rationale for reestablishment of lost or obliterated corner.

**ORIGINAL RECORD:** Set a limestone 24"x7"x3" for cor. Secs. 25, 36, 30 & 31.

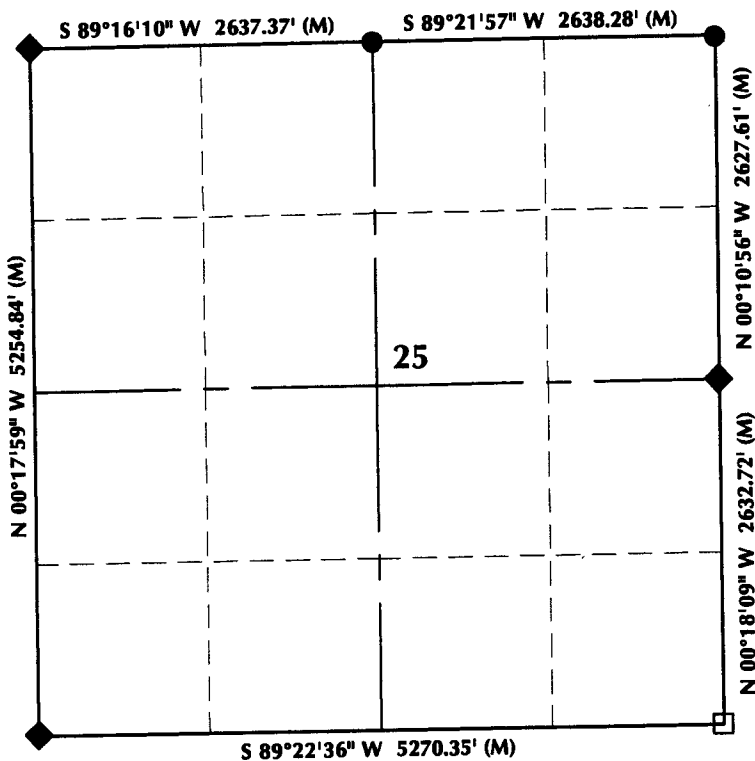
**FOUND:** Witness corner to the northwest, set by LS 566. Two north-south fence lines on either side of a gravel road.

**SET:** Set aluminum cap LS 14407 33.7 feet east of west fence line and 41.98 feet S53°23'41"E of witness corner set by LS 566 per the corner record filed by LS 566 in 1977. Set two PK nails 40.7 feet to the N56°42'32"W and 36.1 feet to the S87°07'12"E.

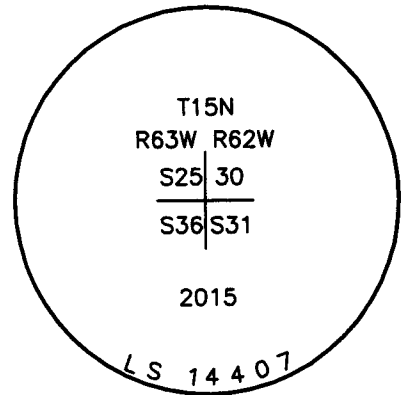
## Monument Location



**RECP #: 666122**  
**RECORDED 7/27/2015 AT 12:24 PM BK# 2456 PG# 121**  
 Debra K. Lathrop, CLERK OF LARAMIE COUNTY, WY PAGE 1 OF 1



## Monument Inscription



**NOTES:**

1. ▲ INDICATES FOUND BLM BRASS CAP
2. ■ INDICATES FOUND STONE
3. ● INDICATES FOUND ALUMINUM CAP
4. ◆ INDICATES SET ALUMINUM CAP
5. □ INDICATES SECTION CORNER PER CORNER RECORD
6. BASIS OF BEARING DERIVED FROM WYOMING COORDINATE SYSTEM NAD83 EAST ZONE
7. ALL MEASURED DISTANCES ARE GRID COMBINED SCALE FACTOR: .99972740
8. DRAWING NOT TO SCALE

Date of Field Work: 3/12/15

Office Reference: 14-49

## Cross Index Plat

	1	2	3	4	5	6	7	8	9	10	11	12	13	14	15	16	17	18	19	20	21	22	23	24	25	
A																										
B																										
C		6	5	4	3	2	1																			
D																										
E																										
F																										
G			7	8	9	10	11	12																		
H																										
J																										
K																										
L			18	17	16	15	14	13																		
M																										
N																										
O																										
P			19	20	21	22	23	24																		
Q																										
R																										
S																										
T			30	29	28	27	26	25																		
U																										
V																										
W																										
X			31	32	33	34	35	36																		
Y																										
Z																										

Land Surveyor/Firm/Address

609 Consulting, LLC  
1095 Saberton Avenue  
Sheridan, WY 82801

Telephone Number: 307-674-0609

This corner record was prepared by me or under my direction and supervision.

SEAL & SIGNATURE

*Jacob I. Dunham*  
 JACOB I. DUNHAM  
 PROFESSIONAL LAND SURVEYOR  
 WYOMING REGISTRATION NUMBER 14407  
 Date 7/14/15  
 WYOMING

Corner Name: Southeast Corner Section 25, T15N, R63W, 6th P.M. County: Laramie Wyoming

Cross-Index No.: V-25

SBRPEPLS/PLSW: March 1994; PLSW January 1998